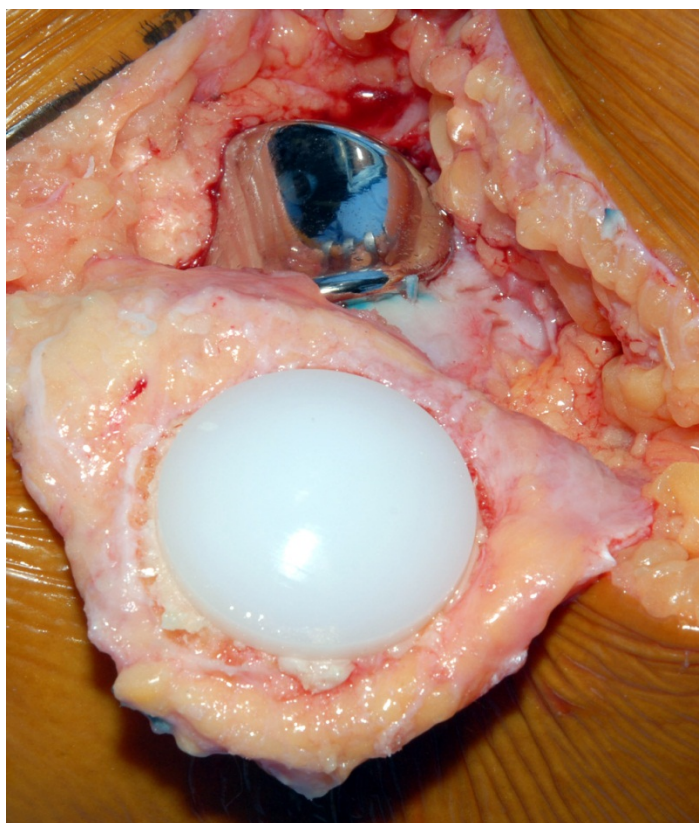


KineMatch® PFR

Patella Resurfacing



KINAMED®
INCORPORATED

- Evert patella and trim osteophytes.
- Measure thickness of native patella using caliper.
- Set height of patella resection guide (part no. 22-800-3019) to correspond to desired **residual** patellar thickness after resection (a minimum residual thickness of 15mm is recommended). *Example: If thickness of native patella is 25mm and a 9mm thick patellar button is desired, then set height to 16mm (25mm – 9mm = 16mm). Therefore, 16mm is the residual thickness of patella left after resection (Figure 1).*
- Grasp patella in jaws of resection guide with anterior surface of patella resting against the foot of the instrument (Figure 2).
- Resect patella with an oscillating saw using slot in jaws of the resection guide (Figure 2).
- Prepare site for KineMatch patellar component using parallel clamp (22-800-3020) with drill guide (22-800-3021) and sizing rings (22-800-3022, -23, or -24) attached, or with lollipop sizer and drill guides (22-800-3017 or 22-800-3018). Drill three peg holes with 6mm tri-peg stop drill (22-800-3003) (Clamp, drill guide, 36mm sizing ring, and 6mm stop drill shown in Figure 3).
- Select appropriate onlay patellar component using onlay patella trials (Table I).
- During cementing, hold patellar component in position with patella clamp (22-800-3020) with cushion collar (22-800-3025 with 22-800-2026) attached, taking care to remove excess cement (Figure 4).
- Reduce patella and observe during entire knee ROM. Patella should track congruently and centrally with little or no pressure applied to the lateral side of patella (“no thumb” test). **Proper patella tracking is critical. Instability or lateralized tracking should be corrected at the time of surgery.**
- If the patella subluxes laterally during the “no thumb” test, consider a lateral retinacular release.



Figure 4. Clamp patella until cement cures.

Onlay P/N	Size	Diameter (mm)	Thickness (mm)
20-420-0101	1	30	8
20-420-0102	2	33	9
20-420-0103	3	36	10
20-420-0104	4	39	11

Table I. Patella sizing chart.

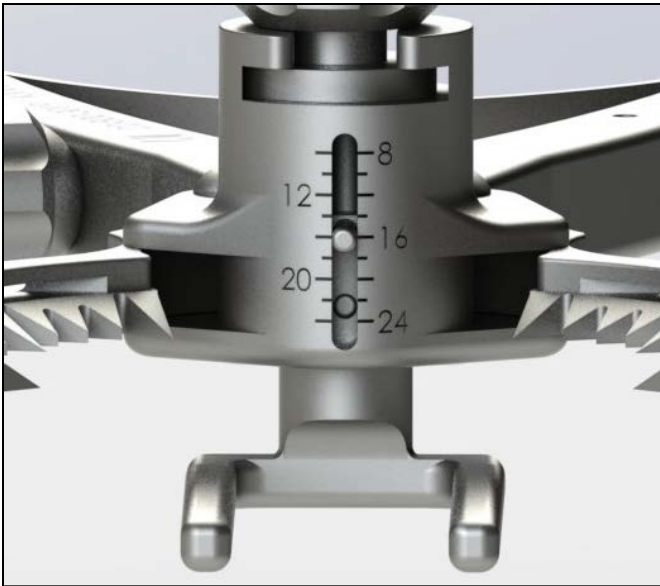


Figure 1. Set height of patella resection guide.

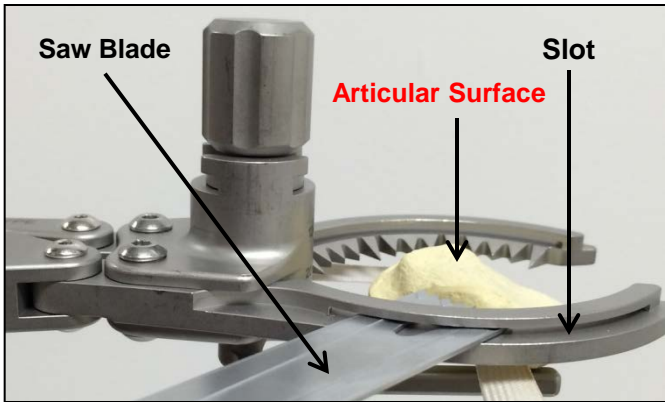


Figure 2. Grasp and resect patella with oscillating saw.

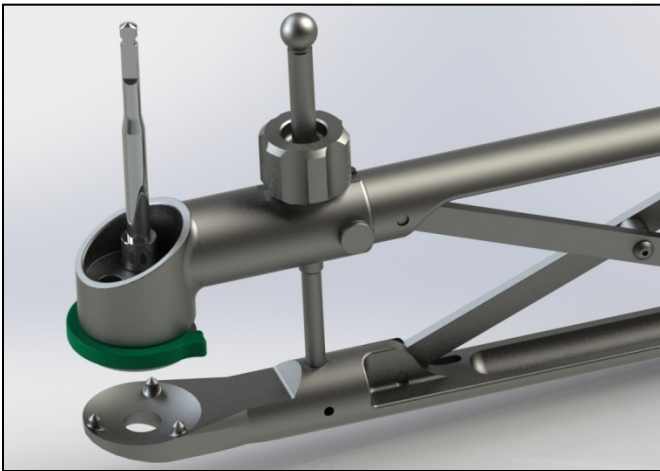
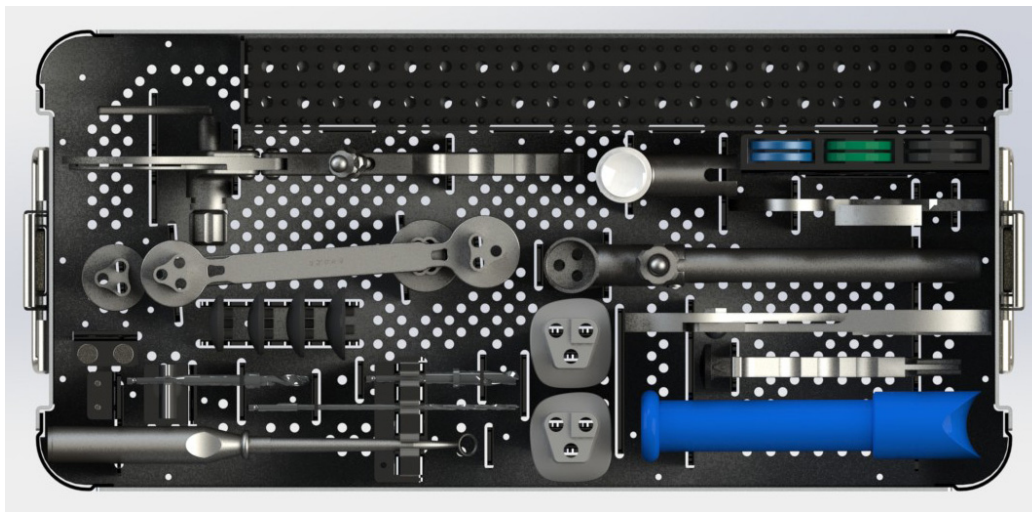


Figure 3. Drill three peg holes with 6mm stop drill.



Postoperative Care

- No immobilization is required and the patient can be made immediate weight-bearing.
- Range of motion should be obtained as soon as possible.
- An accelerated rehabilitation is possible and is encouraged due to the reduced incision size and absence of femoral bone resection compared to total knee arthroplasty.

Patella Implants (Onlay)	Diameter (mm)	Thickness (mm)	Catalog No.
Patella Implant, Size 1	30	8	20-420-0101
Patella Implant, Size 2	33	9	20-420-0102
Patella Implant, Size 3	36	10	20-420-0103
Patella Implant, Size 4	39	11	20-420-0104

Patella Instruments	Catalog No.
Instrument Tray (Autoclave Case)	22-800-1020
Patella Stop Drill, 6mm	22-800-3003
Patella Caliper, Sliding	22-800-3005
Patella Sizer and Drill Guide, 30/33mm	22-800-3017
Patella Sizer and Drill Guide, 36/39mm	22-800-3018
Patella Resection Guide	22-800-3019
Patella Parallel Action Clamp	22-800-3020
Patella Drill Guide for Parallel Action Clamp	22-800-3021
Patella Sizing Rings (3): 33mm, 36mm, 39mm	22-800-3022, -3, -4
Patella Cushion Collar for Parallel Action Clamp	22-800-3025
Patella Cushion for Parallel Action Clamp	22-800-3026
Patella Caliper, Pinch	22-800-3027
Patella Trials (4): 30mm, 33mm, 36mm, 39mm	22-800-4001, -2, -3, -4



KINAMED®
INCORPORATED

For more information:

Phone	1-805-384-2748
Toll-Free (US)	1-800-827-5775
Fax	1-805-384-2792
Website	www.kinamed.com

820 Flynn Road, Camarillo CA 93012-8701 USA

©Kinamed, Inc. 2014

B00169C